

# **ROSS**

## **ORTHODONTIC**

**Family Owned and Operated Since 1981**



**Quality Equipment and Exceptional Office Designs**

***Spring/Summer 2023 / Volume 36 / No. 114***



## ***What business are we in?***

Ross Orthodontic has been specializing in the orthodontic environment since 1981. We help maximize space, increase efficiency, and create a smooth workflow. From the design phase to the manufacture to the installation of the operatory equipment, and the customer service we at Ross are specialists in your environment.

In 1981 the Ross family purchased Mastercraft Dental Company. Our goal was to produce the highest quality equipment at an affordable price.

In 1983 the company name was changed and Ross Orthodontic was started. We dedicated ourselves to improving the orthodontic environment. Ross is one of the only manufacturer's dedicated to orthodontics and the only manufacturer providing design.

Lead by Robert Ross and his two sons, Joseph and Peter, the company has spent almost a half century perfecting its designs and manufacturing of chairs and delivery systems to thousands of satisfied customers.

In 2014, Joseph succeeded Robert as president of Ross, continuing our legacy of building state-of-the-art equipment, all designed to increase your productivity, and more importantly, your profitability. Robert continues to be part of Ross as its' CEO along with his 60 years of experience.

We are constantly working to keep our equipment ahead of the current industry trends and strive to maintain the best quality equipment that will stand the test of time.

Whether you are a recent grad or a seasoned orthodontist, we can help to maximize your potential and increase your profits. We see our customers as fellow business owners and we strive to give them the best equipment, knowledge and customer service in the world of orthodontics. Ross Orthodontic is your source for innovative design and equipment at factory direct prices. Our family at Ross Orthodontic looks forward to helping grow your orthodontic practice and enhance your success.

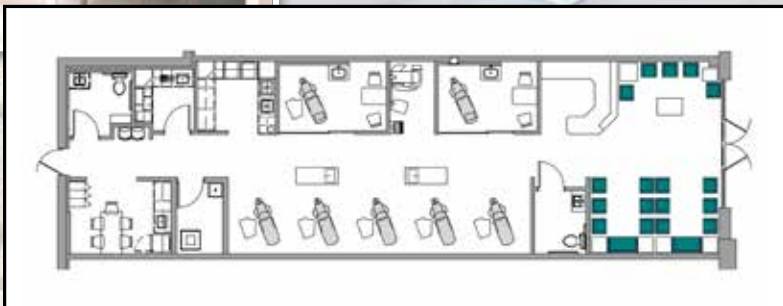
***Not Just Building Office Spaces, But Vehicles  
To Personal And Professional Success!***

Featured Office.....	4-5
Office Design Service.....	6-7
Patient Chairs .....	8-9
Doctor Stools & Chairs .....	10-11
Delivery Units .....	12-17
Custom Cabinetry .....	18
Sterilization Centers .....	18
Lighting.....	19
Computer Mounts .....	20
Drawer Dividers / Inserts .....	20
Vacuum / Compressors.....	21
Gaming Systems .....	22
OEM Parts .....	23





**Gulf Coast Orthodontics  
Naples, FL**









## ***Building a New Office or Remodeling an Existing One...***



*Time Spent Visiting our  
Showroom is time well spent  
and can equal great savings!*



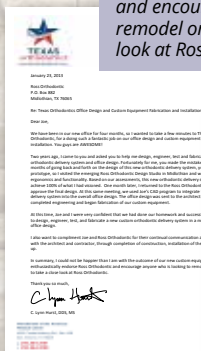
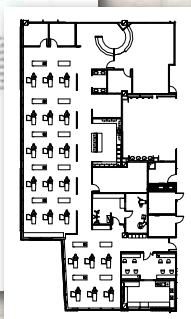
**HEALTH AND SAFETY IS OUR PRIORITY,**  
*Call and set up a personalized tour of our showroom  
and design center via a video conference.*



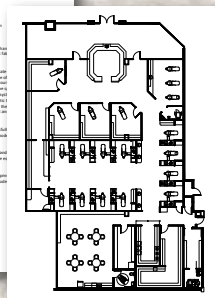
## Take Advantage of **OVER 40 YEARS** of Experience Designing and Equipping Orthodontic Offices



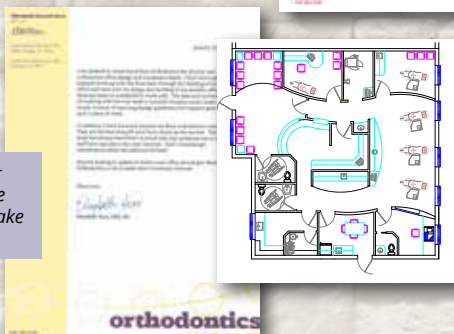
*"From the initial clinic layout, to installing the units and sterilization area, your team has stepped up to the plate to ensure our needs were met."*



*"I enthusiastically endorse Ross Orthodontic and encourage anyone who is looking to remodel or build a new office to take a close look at Ross Orthodontic."*



*"Anyone looking to update or build a new office should give Ross Orthodontic a call to make their transition a breeze."*



**10 Common Mistakes in Office Design You Can Easily Avoid!**  
Ross Orthodontic Equipment Specialists.

★ Go to **www.rossorthodontic.com** and email us for this **FREE** information that can impact your office's efficiency and profitability.





## Optima Chair

- New drop toe design for easier patient access
- Modern clean rounded shape
- Extra thin back
- Fully upholstered
- Not one but, two layers of multi-density conforming foam
- Foam lumbar support for patient comfort
- Heavy duty all steel frame
- No exposed hinges or hardware
- Extendable headrest
- Automatic return for hands-free operation
- Price includes manual height adjustable base

**Optima Chair / \$5,173 / Sale \$3,695**

## Maxus Chair

- Traditional style back
- Fully upholstered
- Not one but, two layers of multi-density conforming foam
- Foam lumbar support for patient comfort
- Welded all steel frame
- Un-restricted patient access
- No exposed hinges or hardware
- Extendable headrest
- Automatic return for hands-free operation
- Price includes manual height adjustable base

**Maxus Chair / \$4,333 / Sale \$3,095**







## Matador Chair

- Modern clean rounded shape
- Extra thin back
- Fully upholstered
- Not one but, two layers of multi-density conforming foam
- Foam lumbar support for patient comfort
- Welded all steel frame
- Un-restricted patient access
- No exposed hinges or hardware
- Extendable headrest
- Automatic return for hands-free operation
- Price includes manual height adjustable base

**Matador Chair / \$4,643/ Sale \$3,295**

## Independence Chair

- Fully upholstered smooth cushions
- Available in 10 colors
- Our thinnest back yet
- High-quality contouring foam
- Welded all steel frame
- Un-restricted patient access
- Extendable headrest
- Fixed height all steel base
- Automatic return for hands-free operation
- Price includes standard base

**Independence Chair / \$4,193 / Sale \$2,995**





## Align Stool

- Double contoured waterfall seat
- Two-way adjustable lumbar support
- Seat tilt mechanism
- 2" of multi-layer foam provides all day comfort and back support
- Up to 5" of height adjustment
- Soft Urethane Lined Casters

Align Stool / \$1,113 / **Sale \$795**



## Dallas Stool

- Contoured curved plywood seat
- Adjustable backrest
- 2" of multi-layer foam
- Five leg polished aluminum base
- Soft Urethane Lined Casters
- Available in 10 colors

Dallas Stool / \$693 / **Sale \$449**







## Flexion Stool

- Double contoured waterfall seat
- Two-way adjustable lumbar support
- 2" of multi-layer foam provides all day comfort and back support
- Soft Urethane Lined Casters

Flexion Stool / \$973 / **Sale \$695**



## Simplicity Stool

- 3" of multi-layer foam
- Height adjustable with ring
- Soft Urethane Lined Casters

Simplicity Stool / \$553 / **Sale \$395**





## Protegé Unit

- Clean modern angular design unit is available floor mounted (as shown) or as a mobile
- Small CPU storage area for small form CPUs
- Five large all wood, doweled storage drawers
- Pull-out work tablet or mouse drawer
- Built-in full-sized keyboard drawer
- All drawers on full extension ball bearing slides
- Two handpiece control, air/water syringe, high/low suction, bottled water system, pneumatic air filter regulator, and rheostat

\* Available with or without keyboard pull-out

**Protegé / \$5,453 / Sale \$4,095**

## Mini-Pro

- Takes up only 18" of width
- Four all wood, doweled storage drawers
- Pull-out work tablet
- All drawers on full extension ball bearing slides
- Two handpiece control, air/water syringe, high/low suction, bottled water system, pneumatic air filter regulator, and rheostat

**Mini-Pro / \$5,173 / Sale \$3,695**







## Model A

- The Model A unit is available floor mounted (as shown) or as a mobile
- Large vented CPU storage area
- Five large all wood, doweled storage drawers
- Pull-out work tablet or mouse drawer
- Built-in full-sized keyboard drawer
- All drawers on full extension ball bearing slides
- Two handpiece control, air/water syringe, high/low suction, bottled water system, pneumatic air filter regulator, and rheostat

**Model A / \$5,733 / Sale \$4,095**

## Model S

- The Model S unit includes all the same great features as the Model A unit but without the built-in keyboard drawer

**Model S / \$5,453 / Sale \$3,895**





## Spacemaker Plus EXT Unit

- Spacemaker Plus EXT delivery unit, complete with our largest work surface and storage drawers
- Four extra-wide storage drawers
- Pull-out work tablet
- Pull-out full-sized keyboard drawer
- Full extension ball-bearing drawer slides for all drawer access
- Concealed tubing
- Instrumentation includes a two handpiece control, rheostat, air/water syringe, high/low suction, bottled water system, pneumatic filter/regulator and gauge
- Master on/off switch

Spacemaker EXT / \$6,993 / **Sale \$4,995**

## Spacemaker

- Our smallest unit foot print only 12" wide
- Concealed instrument tubing's
- Four storage drawers
- Full extension ball bearing slides
- Two handpiece control
- High/low suction
- Three way syringe
- Bottled water system
- Master on-off switch
- Air filter regulators and gauge

Spacemaker / \$6,153 / **Sale \$4,395**







## LeSabre Unit

- Unique sleek oval shaped design
- Concealed instrument tubings
- Five wide storage drawers
- Full extension ball bearing slides
- Two handpiece control
- High/low suction
- Three way syringe
- Bottled water system
- Master on-off switch
- Air filter regulator and gauge

LeSabre / \$6,153 / **Sale \$4,395**





## Saturn Model V

- Functional floating design opens up floor space and allows unit to move parallel to patient up to 20", clean sleek modern V-shape
- Three large all wood, doweled storage drawers
- Pull-out work tablet
- Built-in full-sized keyboard pull-out
- All drawers on full extension ball bearing slides
- Two handpiece control, air/water syringe, high/low suction, bottled water system, pneumatic air filter regulator, and rheostat
- Price includes chair top and manual height adjustable base

\* Available with or without keyboard pull-out

**Saturn Model V / \$8,113 / Sale \$5,795**

## Model T Unit

- Our new Model T unit is available in unlimited colors all with a designer white solid surface top
- Available as a floor mounted unit or mobile
- Four large storage drawers
- All drawers on full extension ball bearing slides
- Two handpiece control, air/water syringe, high/low suction, bottled water system, pneumatic air filter regulator, and rheostat

**Model T / \$4,053 / Sale \$2,895**







## Saturn Model H

- Functional floating design opens up floor space and allows unit to move parallel to patient up to 20"
- Three large all wood, doweled storage drawers
- Pull-out work tablet
- All drawers on full extension ball bearing slides
- Two handpiece control, air/water syringe, high/low suction, bottled water system, pneumatic air filter regulator, and rheostat
- Price includes chair top and manual height adjustable base

\* Available with or without keyboard pull-out

**Saturn Model H / \$7,833 / Sale \$5,595**



## Saturn Model C

- Same great features as the Model H but with a full-sized built-in keyboard drawer
- Large vented back door

**Saturn Model C / \$8,113 / Sale \$5,795**



## "BUILT TO LAST"

*Ross Quality & Durability for Over 40 Years*





## Polaris LED Task Light

- State-of-the-art LED
- Articulating arm and swivels
- Touch pad controlled
- Separate on/off and dimmer
- High/med/low settings
- Up to 20,000 hour bulb life
- Natural 4500k color light
- Pole and desk mount available
- 3-year warranty

*\*Available in Black, Silver, Beige or White*

**Polaris Task Light / \$1,813 / Sale \$1,295**



Colors



**Polaris  
Desk Mounted**

**Polaris  
Pole Mounted**



## LED Dental Light

- Patented optical projection with reflected LED light
- Creates a 4" x 7" illuminated area removing the glare from your patients eyes
- Automatic intensity memorization
- 320° rotation and 2-Axis head movement, with removable autoclavable handles
- 5000K color temperature
- Light intensity of 3,000-35,000 LUX
- Light is off white in color

**LED Dental Light / \$2,430 / Sale \$2,095**



## INNOVATIVE & ERGONOMIC FLAT SCREEN, LAPTOP, AND TABLET MOUNTS

Ergonomic flat-screen mounts for every application. Updating or enhancing your office with new computer compatible delivery systems or adding a computer to existing delivery systems, we have the mounts you need. Arms support up to 18 lbs.

- Available in Black, White and Gray
- Optional pole mount available
- Optional heavy-duty model supports up to 28 lbs.
- Dual monitor mounts available
- Also available for tablets



## NEW! CUSTOMIZABLE DRAWER DIVIDERS

Each Kit comes with 4 divider strips 24" long, 16 holders with self-stick adhesive. Available in white or black and 1,2,3" heights.

**Prices starting at \$12.95 per kit.**



## Wet Vacuum Pumps

- High output, proven performance
- Exclusive internal water recycling
- Water-recycling bypass
- Durable aluminum bronze construction
- Models from 3 users up to 10 users available

Vacuum Pumps / **From \$3,595**

## Dry Vacuum Pumps

- Oil-less and waterless design
- Quiet operation
- Consistent high performance – up to 18" Hg
- Compact design, with floor space requirements comparable to conventional wet-ring vacuums
- Models from 5 users up to 20 users available

Vacuum Pumps / **From \$11,842**

## Oil-less Air Compressors

- 0.01-micron coalescent filter designed to provide the ultimate in clean air, generating the capacity to capture up to 99.9997% of compressed air contaminants
- Starting at 1.5 Horsepower up to 4.8 horsepower
- Quiet operation
- Models from 3 users up to 20 users available

Compressors / **From \$6,631**



## INTERACTIVE PLAY AND GAMING SYSTEMS BY KIDSPACE 800-668-0206

The ultra contemporary design draws the kids to this game center. Play today's most exciting video games in head to head competition or try and beat the machine.

Touch2Play is available in this sleek and durable Wall Mount style. It can be set at any height to suit various age groups and applications. Young and old alike are entertained by over 70 games, available in 19 languages. Your choice of 14 standard colors or for a small fee custom colors and stainless steel are available.



25" W x 24" D x 58" H



19.5" W x 16.5" H x 5" D

## What your waiting room has been waiting for.

There are 1440 minutes in a day. You only need four of them. Don't forget to brush.

Smile, there are other options out there for straightening your teeth, but none offers the level of comfort, convenience and confidence that you'll find with Invisalign.

**DID YOU KNOW...**  
Most tooth loss in people under age 35 is caused by athletic trauma, fights or accidents.

Get a custom fit of Invisalign from a dentist in your area. It's the most comfortable, most effective, and most discreet way to straighten your teeth. That's why it's the #1 choice for New York's 1,000,000+ residents.

**Got a bad bite?**  
DON'T WORRY, YOURS IS FIXABLE.

Orthodontics offers the most effective, most comfortable, and most discreet way to straighten your teeth. That's why it's the #1 choice for New York's 1,000,000+ residents.

**Got a bad bite?**  
DON'T WORRY, YOURS IS FIXABLE.

Orthodontics offers the most effective, most comfortable, and most discreet way to straighten your teeth. That's why it's the #1 choice for New York's 1,000,000+ residents.

**DID YOU KNOW...**  
the average person has about 10,000 loose buds and they're replaced every 2 weeks or so.

MYPROVIEWER™

## MyProViewer

Easy to customize. Hard to ignore.

**as low as \$99.00 per month**

**1-866-521-0555**



## OEM REPLACEMENT PARTS



**Syringe**



**Foot Control**



**Deluxe HVE Valve**



**Long Deluxe HVE Valve**



**Deluxe Saliva Ejector Valve**



**Solids Collector Trap**



**Instrument Holders**



**Valves**

PART	COLOR	PART#	PRICES
<b>SYRINGE</b>			
Three-way Air/Water Syringe		3430	\$99.75
Less tubing			
Syringe tip metal package of 5		3061	\$35.00
Syringe tip metal package of 50		3059	\$297.00
Tubing aseptic coiled	Gray	T1759-Gray	
Tubing aseptic coiled	Black	T1759-Black	
Tubing aseptic straight	Gray	T1759-G	\$1.00 per ft
Tubing aseptic straight	Black	T1759-B	
Repair Kit		3066	\$15.00
<b>FOOT CONTROL</b>			
Disc foot control with aseptic tubing		F1200	\$104.00
Tubing 2-hole aseptic	Gray	T1752-G	\$2.00 per ft
Tubing 2-hole aseptic	Black	T1752-B	
<b>DELUXE HVE VALVES</b>			
Deluxe HVE valve with QD		FLIP-D	\$64.15
Deluxe LONG HVE valve with QD		FLIP-A	\$64.15
Aseptic Geometric ID vacuum tubing	Gray	T1796-G	\$3.20 per
Braided HVE tubing		00680	\$6.50 per ft
<b>DELUXE SALIVA EJECTOR VALVE</b>			
Deluxe Saliva Ejector valve		FLIP-SE	\$62.37
with screw on silicone head		SSE-HEAD	\$35.60
Silicone screw on head		S-1397	\$17.49
Rubber slip on heads for other valves pkg 5		T-1775-Gray	\$1.00
Saliva Ejector tubing	Gray	T-1775-B	
Saliva Ejector tubing	Black	S-1361	\$4.50
Saliva Ejector Trap package of 10			
<b>SOLIDS COLLECTOR</b>			
Solids Collector Trap - Disposable vacuum trap		S1398	\$132.00 per 144
Solids Collector Assy. Complete		S1394	\$46.00
<b>HANDPIECE TUBING</b>			
Handpiece tubing 4-hole straight	Gray	T1741- G	\$33.00 ea
Handpiece tubing 4-hole straight	Black	T1741- B	\$33.00 ea
Handpiece tubing 4-hole coiled	Gray	T-1733-G	\$33.00 ea
Handpiece tubing 4 hole coiled	Black	T-1733-B	\$33.00 ea
<b>INSTRUMENT HOLDERS</b>			
Universal Holder	Gray	H-1010G	\$23.00
	Black	H1010-B	\$23.00
Standard HVE Holder	Gray	H1020-G	\$23.00
	Black	H1020-B	\$23.00
<b>VALVES</b>			
On/Off 3-way valve	Gray	V-1506-3-G	\$14.70
	Black	V-1506-3-B	\$14.70
Female Quick Disconnect	Blue	P1068-BLU	\$22.35
	Yellow	P1068-YEL	\$22.35
Water System Bottle		R-8128	\$15.00

Prices may change without notice

# ROSS ORTHODONTIC

If you are looking at our office design services or equipment, you are about to embark on one of the most consequential decisions of your career.

Visit us at an up coming meeting or visit our showroom/design center and let the design professionals and equipment specialists at Ross Orthodontic assist you.

## Upcoming 2023 Meetings

### AAO

April 22-24 Chicago, IL

### OP Summit

Sept. 7-9 Orlando, FL

### CAO

Sept. 27-30 Disneyworld, FL

### MOPC

Oct. 13-14 San Diego, CA

### NESO

Oct. 20-21 Montreal, QC

### SAO-SAO

Oct. 26-28 Amelia Island, FL

### PCSO

Nov. 3-4 Disneyland, CA

## Showroom and Design Center

880 Eastgate Road, Midlothian, Texas 76065

PRSRT: STD.  
JF% FH - &  
C /%  
New Richmond, WI  
54017  
Permit No. 16

ROSS ORTHODONTIC  
EQUIPMENT & OFFICE DESIGN  
PO Box 882, Midlothian, Texas 76065