



## Orthodontic

MARCH / APRIL 2020 / VOLUME 33 / NO. 108

**Specializing in Cost Effective Modernization**

**Family  
Owned and  
Operated for  
39 years!**



**Coreil Orthodontics  
Lafayette, LA**

### **Office Design Workshops**

**AAO Atlanta, GA**  
May 1-4 - Booth# 1533

**OAQ Niagara Falls, ON**  
May 29-30

**Discover Equipment Features  
That Work For You!**

**Orthodontic Equipment and  
Functional Office Design**

**To Preview our Showroom visit  
[www.rossorthodontic.com](http://www.rossorthodontic.com)  
or call 1-800-247-4109**

# ROSS

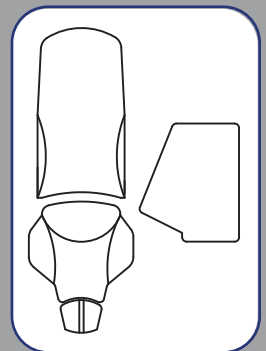
**Clean Modern  
Angular Design**

**Computer Access  
for both Doctor  
and Assistant**



## Bay Area Featuring:

Protegé XLW delivery unit with optional flat screen and keyboard mount, Matador patient chair, Flexion doctor's stool, and Polaris LED task light



For more detailed information visit [www.rossorthodontic.com](http://www.rossorthodontic.com)  
or contact a specialist at 1-800-247-4109



## Protegé XLW Unit

Protegé XLW delivery unit, a clean smooth modern wedge shape, complete with five wide storage drawers, a pullout work tablet, all mounted on full extension ball-bearing drawer slides for all drawer access. Instrumentation includes a two handpiece control, rheostat, air/water syringe, high/low suction, bottled water system, pneumatic filter/regulator and gauge, master on/off switch. Protégé unit is available with optional built-in full-sized keyboard drawer.

**Protegé XLW | \$5,033 | Sale \$3,595**

## Matador Chair

Matador patient chair with its concealed hinges and chassis provides un-restricted patient access. Matador chair features a smooth rounded shape, an extra thin back, foam lumbar support, extendable headrest, and automatic return for hands-free patient dismissal. Price includes standard base.

**Matador Chair | \$4,193 | Sale \$2,995**



## Flexion Stool

Flexion stool with its double contoured waterfall seat, two-way adjustable lumbar support, with 2" of multi-layer foam provides all day comfort and back support.

**Flexion Stool | \$735 | Sale \$525**

## Polaris LED Task Light

Polaris LED task light is state of the art, using a 4 bulb LED, articulating arm and swivel joints, produces a crisp clean rectangular light pattern, low, medium, and high settings, separate on-off button under touch pad control, top it off with up to a 20,000 hour bulb life. Available in four colors: black, white, silver, and beige.

**Polaris Task Light | \$1,250 | Sale \$1,095**



**For more detailed information visit [www.rossorthodontic.com](http://www.rossorthodontic.com)  
or contact a specialist at 1-800-247-4109**

# ROSS

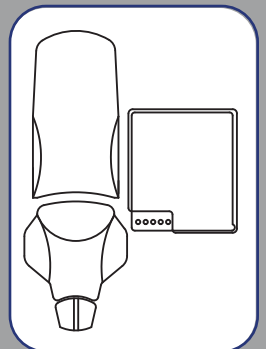
**Floating  
Chairside Unit**

**Clean off the  
floor Design**



## Bay Area Featuring:

Saturn Model V delivery unit, Maxus patient chair,  
Align doctor's stool, and Polaris LED task light



For more detailed information visit [www.rossorthodontic.com](http://www.rossorthodontic.com)  
or contact a specialist at 1-800-247-4109





## Saturn Model V Unit

Saturn Model V delivery unit, a clean smooth modern wedge shape, three wide storage drawers, a pullout work tablet, mounted on full extension ball-bearing drawer slides for all drawer access, all floating on the Ross glide bracket. Instrumentation includes a two handpiece control, rheostat, air/water syringe, high/low suction, bottled water system, pneumatic filter/regulator and gauge, master on/off switch. Includes chair top and base. Saturn unit is available with optional built-in full-sized keyboard drawer.

**Saturn Model V | \$7,133 | Sale \$5,095**

## Maxus Chair

Maxus patient chair with its concealed hinges and chassis provides un-restricted patient access. Maxus chair features a classic winged back shape, a thin back, foam lumbar support, extendable headrest, and automatic return for hands-free patient dismissal. Price includes standard base.

**Maxus Chair | \$3,913 | Sale \$2,795**



## Align Stool

Align stool with its double contoured waterfall seat, 2-way adjustable lumbar support, plus seat tilt mechanism, with 2" of multi-layer foam provides all day comfort and back support.

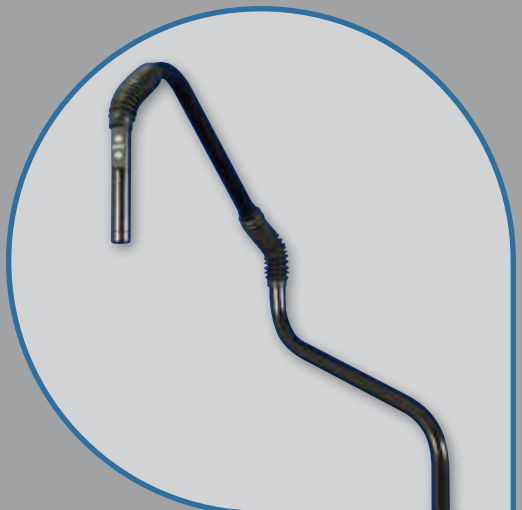
**Align Stool | \$875 | Sale \$625**



## Polaris LED Task Light

Polaris LED task light is state of the art, using a 4 bulb LED, articulating arm and swivel joints, produces a crisp clean rectangular light pattern, low, medium, and high settings, separate on/off button under touch pad control, top it off with up to a 20,000 hour bulb life. Available in four colors: Black, White, Silver, and Beige.

**Polaris Task Light | \$1,250 | Sale \$1,095**



**For more detailed information visit [www.rossorthodontic.com](http://www.rossorthodontic.com)  
or contact a specialist at 1-800-247-4109**



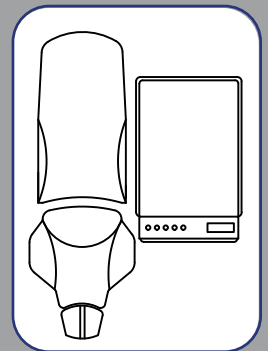
**Maximum  
Chairside Storage**

**Concealed  
Instrument  
Tubings**



## **Bay Area Featuring:**

Spacemaker Plus EXT delivery unit with optional flat screen mount, Matador patient chair, and Flexion doctor's stool



For more detailed information visit [www.rossorthodontic.com](http://www.rossorthodontic.com)  
or contact a specialist at 1-800-247-4109



## Spacemaker Plus EXT Unit

Spacemaker Plus EXT delivery unit, complete with our largest work surface and storage drawers, four extra-wide storage drawers, a pull-out work tablet, pull-out full-sized keyboard drawer, all mounted on full extension ball-bearing drawer slides for all drawer access. Concealed tubing, instrumentation includes a two handpiece control, rheostat, air/water syringe, high/low suction, bottled water system, pneumatic filter/regulator and gauge, master on/off switch.

**Spacemaker EXT | \$6,293 | Sale \$4,495**

## Matador Chair

Matador patient chair with its concealed hinges and chassis provides un-restricted patient access. Matador chair features a smooth rounded shape, an extra thin back, foam lumbar support, extendable headrest, and automatic return for hands-free patient dismissal. Price includes standard base.

**Matador Chair | \$4,193 | Sale \$2,995**



## Flexion Stool

Flexion stool with its double contoured waterfall seat, 2-way adjustable lumbar support, with 2" of multi-layer foam provides all day comfort and back support.

**Flexion Stool | \$735 | Sale \$525**

## Curved Post Task Light

Curved post task light, traditional halogen bulb with a parabolic reflector, articulating arm and swivel joints, 3 axis head movement, features an adjustable rectangular light pattern, high/low settings, auto on/off control. Available in three colors: black, white, and silver.

**Curved Post Light | \$2,646 | Sale \$1,890**



**For more detailed information visit [www.rossorthodontic.com](http://www.rossorthodontic.com)  
or contact a specialist at 1-800-247-4109**

# ROSS

**Compact 19"  
Footprint**

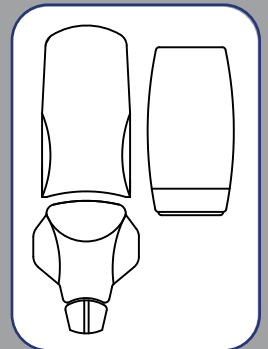
**Unique Oval  
Shape**

**Concealed  
Instrument Tubings**



## Bay Area Featuring:

LeSabre delivery unit with laptop computer mount, Matador patient chair, Flexion doctors stool, and Polaris LED task light



For more detailed information visit [www.rossorthodontic.com](http://www.rossorthodontic.com)  
or contact a specialist at 1-800-247-4109





## LeSabre Unit

LeSabre delivery unit, a Unique clean sleek Oval shape, five wide storage drawers, a pullout work tablet, all mounted on full extension ball-bearing drawer slides for all drawer access. Concealed tubing, instrumentation includes a two handpiece control, rheostat, air/water syringe, high/low suction, bottled water system, pneumatic filter/regulator and gauge, master on/off switch.

**LeSabre | \$5,533 | Sale \$3,995**

## Matador Chair

Matador patient chair with its concealed hinges and chassis provides un-restricted patient access. Matador chair features a smooth rounded shape, an extra thin back, foam lumbar support, extendable headrest, and automatic return for hands-free patient dismissal. Price includes standard base.

**Matador Chair | \$4,193 | Sale \$2,995**



## Flexion Stool

Flexion stool with its double contoured waterfall seat, two-way adjustable lumbar support, with 2" of multi-layer foam provides all day comfort and back support.

**Flexion Stool | \$735 | Sale \$525**

## Polaris LED Task Light

Polaris LED task light is state-of-the-art, using a 4 bulb LED, articulating arm and swivel joints, produces a crisp clean rectangular light pattern, high/med/low settings, separate on/off button under touch pad control, top it off with up to a 20,000 hour bulb life. Available in four colors: Black, White, Silver, and Beige.

**Polaris Task Light | \$1,250 | Sale \$1,095**



**For more detailed information visit [www.rossorthodontic.com](http://www.rossorthodontic.com)  
or contact a specialist at 1-800-247-4109**

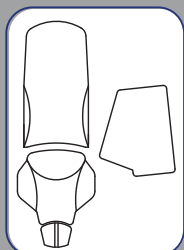


## Saturn Model V

- Functional floating design opens up floor space and allows unit to move parallel to patient up to 20", clean sleek modern V-shape
- 3 large storage drawers
- Pull-out work tablet
- Built-in full-sized keyboard pull-out
- All drawers on full extension ball bearing slides
- Two handpiece control, air/water syringe, high/low suction, bottled water system, pneumatic air filter regulator, and rheostat
- Price includes chair top and standard base

\* Available with or without keyboard pull-out

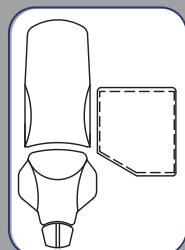
**Saturn Model V**  
\$7,413 | Sale \$5,295



## Saturn Model H

- Functional floating design opens up floor space and allows unit to move parallel to patient up to 20"
  - 3 large storage drawers
  - Pull-out work tablet
  - All drawers on full extension ball bearing slides
  - Two handpiece control, air/water syringe, high/low suction, bottled water system, pneumatic air filter regulator, and rheostat
  - Price includes chair top and standard base
- \* Available with or without keyboard pull-out

**Saturn Model H**  
\$7,133 | Sale \$5,095



For more detailed information visit [www.rossorthodontic.com](http://www.rossorthodontic.com)  
or contact a specialist at 1-800-247-4109

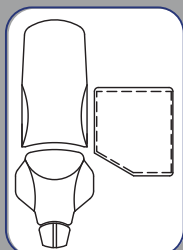


### Model A Unit

- The Model A unit is available floor mounted (as shown) or as a mobile
- Large vented CPU storage area
- Five large storage drawers
- Pull-out work tablet or mouse drawer
- Built-in full-sized keyboard drawer
- All drawers on full extension ball bearing slides
- Two handpiece control, air/water syringe, high/low suction, bottled water system, pneumatic air filter regulator, and rheostat

\* Available with or without keyboard pull-out

**Model A**  
\$5,313 | Sale \$3,795

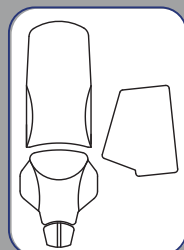


### Protegé Unit

- Clean modern angular design unit is available floor mounted (as shown) or as a mobile
- Small CPU storage area for small form CPUs
- Five large storage drawers
- Pull-out work tablet or mouse drawer
- Built-in full-sized keyboard drawer
- All drawers on full extension ball bearing slides
- Two handpiece control, air/water syringe, high/low suction, bottled water system, pneumatic air filter regulator, and rheostat

\* Available with or without keyboard pull-out

**Protegé**  
\$5,313 | Sale \$3,795



For more detailed information visit [www.rossorthodontic.com](http://www.rossorthodontic.com)  
or contact a specialist at 1-800-247-4109



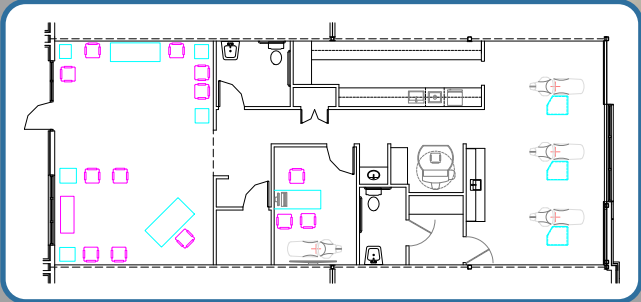
## *Office Showcase Featuring*

Coreil Orthodontics  
Lafayette, LA



For more detailed information visit [www.rossorthodontic.com](http://www.rossorthodontic.com)  
or contact a specialist at 1-800-247-4109





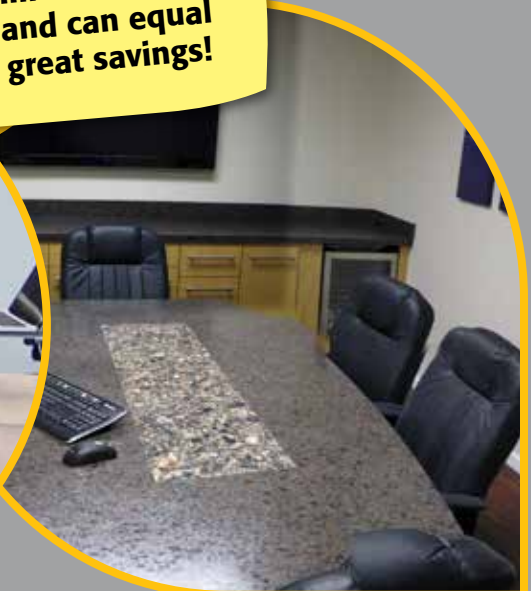
For more detailed information visit [www.rossorthodontic.com](http://www.rossorthodontic.com)  
or contact a specialist at 1-800-247-4109



## Building a New Office or Remodeling an Existing One



**Time Spent  
Visiting our  
Showroom is  
time well spent  
and can equal  
great savings!**

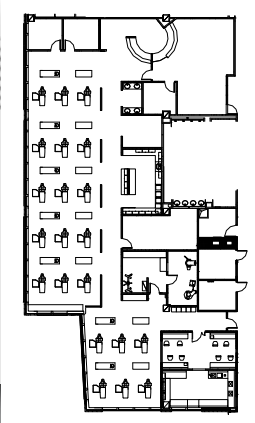
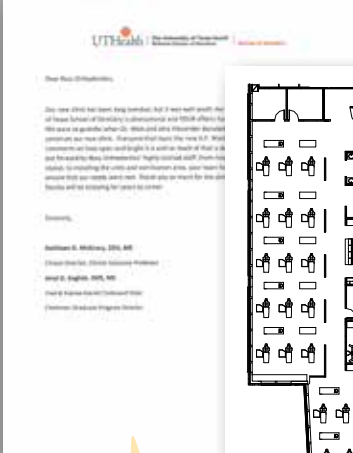


## VISIT OUR OFFICE DESIGN CENTER AND SHOWROOM

For more detailed information visit [www.rossorthodontic.com](http://www.rossorthodontic.com)  
or contact a specialist at 1-800-247-4109



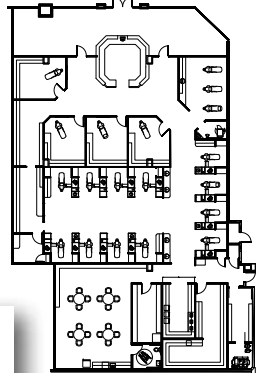
# TAKE ADVANTAGE OF OVER 39 YEARS OF EXPERIENCE DESIGNING AND EQUIPPING ORTHODONTIC OFFICES



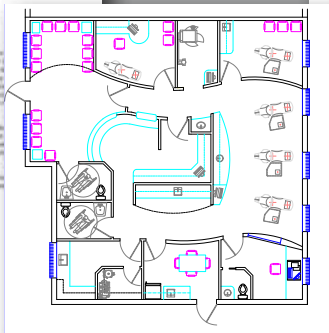
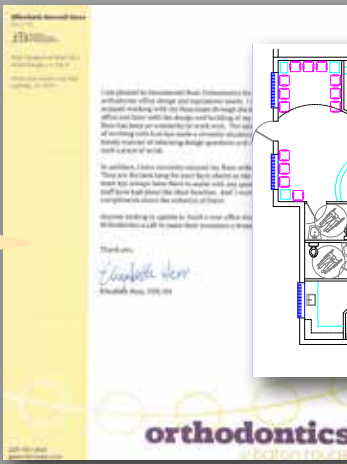
*"I enthusiastically endorse Ross Orthodontic and encourage anyone who is looking to remodel or build a new office to take a close look at Ross Orthodontic."*



*"From the initial clinic layout, to installing the units and sterilization area, your team has stepped up to the plate to ensure our needs were met."*



*"Anyone looking to update or build a new office should give Ross Orthodontic a call to make their transition a breeze."*



# CALL AND SET-UP A PERSONAL AND PRIVATE VISIT TO OUR DESIGN CENTER & EQUIPMENT SHOWROOM

For more detailed information visit [www.rossorthodontic.com](http://www.rossorthodontic.com) or contact a specialist at 1-800-247-4109



**"BUILT TO LAST"**

**Ross Quality & Durability for Over 39 Years**



For more detailed information visit [www.rossorthodontic.com](http://www.rossorthodontic.com)  
or contact a specialist at 1-800-247-4109

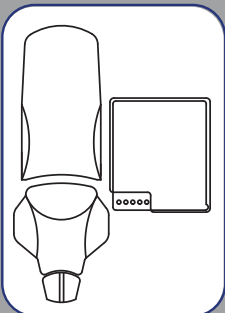




### Model V2 Unit

- Concealed instrument tubings
- Smooth rounded drawer fronts no handles
- Five large storage drawers
- Pull-out work tablet or mini keyboard drawer
- Dedicated and vented CPU space
- Two handpiece control, air/water syringe, high/low suction, bottled water system, pneumatic air filter regulator, and rheostat

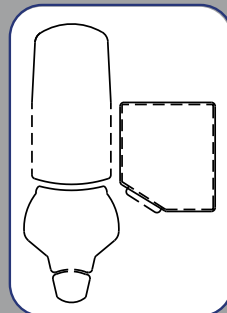
Model V2 | \$9,153 | **Sale \$4,395**



### Model T Unit

- Our new Model T unit is available in unlimited colors all with a designer white solid surface top
- Available as a floor mounted unit or mobile
- Four large storage drawers
- All drawers on full extension ball bearing slides
- Two handpiece control, air/water syringe, high/low suction, bottled water system, pneumatic air filter regulator, and rheostat

Model T | \$4,193 | **Sale \$2,595**



For more detailed information visit [www.rossorthodontic.com](http://www.rossorthodontic.com)  
or contact a specialist at 1-800-247-4109



### Matador Chair

- Modern clean rounded shape
- Extra thin back
- Fully upholstered
- Not one but, two layers of multi-density conforming foam
- Foam lumbar support for patient comfort
- Welded all steel frame
- Un-restricted patient access
- No exposed hinges or hardware
- Extendable headrest
- Automatic return for hands-free operation
- Price includes standard base

Matador Chair | ~~\$4,193~~ | **Sale \$2,995**

### Maxus Chair

- Traditional style back
- Fully upholstered
- Not one but, two layers of multi-density conforming foam
- Foam lumbar support for patient comfort
- Welded all steel frame
- Un-restricted patient access
- No exposed hinges or hardware
- Extendable headrest
- Automatic return for hands-free operation
- Price includes standard base

Maxus Chair | ~~\$3,913~~ | **Sale \$2,795**

### Independence Chair

- Fully upholstered smooth cushions
- Available in 10 colors
- Our thinnest back yet
- High-quality contouring foam
- Welded all steel frame
- Un-restricted patient access
- Extendable headrest
- Fixed height all steel base
- Automatic return for hands-free operation
- Price includes standard base

Independence Chair | ~~\$3,633~~ | **Sale \$2,595**

For more detailed information visit [www.rossorthodontic.com](http://www.rossorthodontic.com)  
or contact a specialist at 1-800-247-4109



### Flexion Stool

Flexion stool with its double contoured waterfall seat, two-way adjustable lumbar support, with 2" of multi-layer foam provides all day comfort and back support.

Flexion Stool | \$735 | **Sale \$525**



### Align Stool

Align stool with its double contoured waterfall seat, 2-way adjustable lumbar support, plus seat tilt mechanism, with 2" of multi-layer foam provides all day comfort and back support.

Align Stool | \$875 | **Sale \$625**



### Dallas Stool

Dallas stool with its contoured curved plywood seat, adjustable backrest, 2" of multi-layer foam, and 5 leg polished aluminum base, available in 10 colors.

Dallas Stool | \$500 | **Sale \$363**



### Simplicity Stool

3" of multi-layer foam, height adjustable with ring

Simplicity Stool | ~~\$413~~ | **Sale \$295**

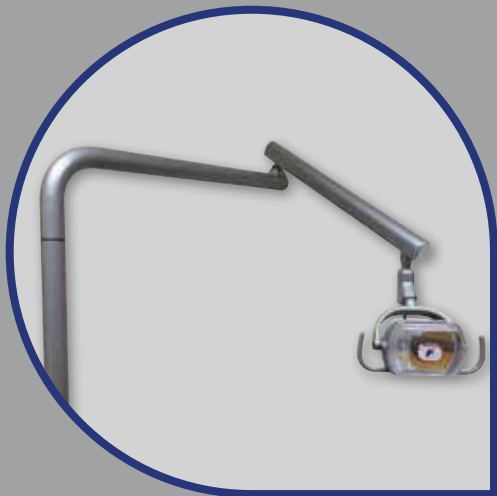


### Polaris LED Task Light

- State-of-the-art LED
- Articulating arm and swivels
- Touch pad controlled
- Separate on/off and dimmer
- High/med/low settings
- Up to 20,000 hour bulb life
- Natural 4500k color light
- Pole and desk mount available
- 3-year warranty

*\*Available in Black, White, Silver or Beige*

**Polaris Task Light | \$1,250 | Sale \$1,095**



### Curved Post Task Light

- Traditional halogen lamp
- With parabolic lens
- Full-size dental light
- Automatic on/off operation
- 3 Axis head movement
- Includes matching post
- High/low settings
- 4200-5500k color light

*\* Available in Black, White or Silver*

**Curved Post Task Light | \$2,646 | Sale \$1,890**



### LED Dental Light

- Traditional style LED light
- Over 500 reflective facets
- Dual touch controls
- 3 Axis head movement
- 5000k color temperature
- Includes matching post for unit or chair mounting

*\* Available in Gray and White only*

**LED Dental Light | \$2,430 | Sale \$1,822**

**For more detailed information visit [www.rossorthodontic.com](http://www.rossorthodontic.com)  
or contact a specialist at 1-800-247-4109**





## INNOVATIVE & ERGONOMIC FLAT SCREEN, LAPTOP, AND TABLET MOUNTS

Ergonomic flat-screen mounts for every application. Updating or enhancing your office with new computer compatible delivery systems or adding a computer to existing delivery systems, we have the mounts you need. Arms support up to 18 lbs.

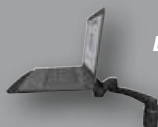


*Desk Mount*

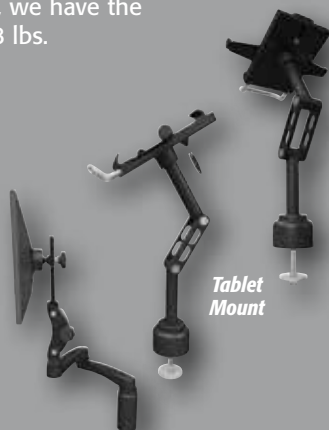


*Desk Mount With Arms And Tray*

- Available in Black, White and Gray
- Optional pole mount available
- Optional heavy-duty model supports up to 28 lbs.
- Also available for tablets



*Desk Mount With Extension Arms*



*Tablet Mount*

## INTERACTIVE PLAY AND GAMING SYSTEMS BY KIDZPACE 800-668-0206



21" W x 24" D x 51" H

Designed for use with Euro Metal or Euro Wood cabinets where ease of mobility is not required.



24.5" W x 13" D x 23" H

Inspired in Europe this beautiful and elegant cabinet design will compliment the most sophisticated décor. Available in four wood finishes and 14 standard panel colors to suit any theme. Over 70 Touch2Play games in 19 different languages will keep customers of all ages entertained.

The ultra contemporary design draws the kids to this game center. Play today's most exciting video games in head to head competition or try and beat the machine.



25" W x 24" D x 58" H

Touch2Play is available in this sleek and durable Wall Mount style. It can be set at any height to suit various age groups and applications. Young and old alike are entertained by over 70 games, available in 19 languages. Your choice of 14 standard colors or for a small fee custom colors and stainless steel are available.



19.5" W x 16.5" H x 5" D

For more detailed information visit [www.rossorthodontic.com](http://www.rossorthodontic.com) or contact a specialist at 1-800-247-4109



## MECHANICAL SYSTEMS



### Compressors

Clean ultra-dry oil free air, Models available sized to your specific office

Compressors | \$6,590 | **From \$5,931**



### Vacuum Pumps

Wet and Dry vacuum pumps sized to your specific office

Vacuum Pumps | \$3,545 | **From \$3,190**

## STERILIZATION EQUIPMENT



### DDS 7000 Orthodontic Dry Heat Sterilizer

Cool to Cool cycle - No additional fan needed

Dry Heat Sterilizer | \$4,560 | **Sale \$4,332**



### DDUS60 Ultrasonic Cleaning Machine

Available with built-in Dentrionix rack or Basket

Ultrasonic Machine | \$2,460 | **Sale \$2,337**

For more detailed information visit [www.rossorthodontic.com](http://www.rossorthodontic.com)  
or contact a specialist at 1-800-247-4109



## OEM REPLACEMENT PARTS



Syringe

### Syringe

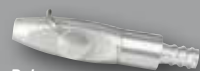
Part	Color	Part#	Price\$
Three-way Air/Water Syringe		3430	\$99.75
Less tubing			
Syringe tip metal package of 5		3061	\$35.00
Syringe tip metal package of 50		3059	\$297.00
Tubing aseptic coiled	Gray	T1759-Gray	
Tubing aseptic coiled	Black	T1759-Black	
Tubing aseptic coiled	Beige	T1850-Beige	\$15.00 ea.
Tubing aseptic straight	Gray	T1759-G	\$1.00 per ft
Tubing aseptic straight	Black	T1759-B	
Tubing aseptic straight	Beige	T1759-SD	
Repair Kit		3066	\$15.00



Foot Control

### Foot Control

Disc foot control with aseptic tubing		F1200	\$104.00
Tubing 2-hole aseptic	Gray	T1752-G	\$2.00 per ft
Tubing 2-hole aseptic	Beige	T1752-SD	
Tubing 2-hole aseptic	Black	T1752-B	



Deluxe HVE Valve

### Deluxe HVE Valves

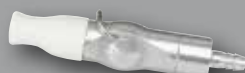
Deluxe HVE valve with QD		FLIP-D	\$64.15
Deluxe LONG HVE valve with QD		FLIP-A	\$64.15
Aseptic Geometric ID vacuum tubing	Gray	T1796-G	\$3.20 per foot
Aseptic Geometric ID vacuum tubing	Beige	T1796-SD	
Braided HVE tubing		00680	\$5.00 per ft



Long Deluxe HVE Valve

### Deluxe Saliva Ejector Valve

Deluxe Saliva Ejector valve with screw on silicone head		FLIP-SE	\$62.37
Silicone screw on head		SSE-HEAD	\$35.60
Rubber slip on heads for other valves pkg 5		S-1397	\$17.49
Saliva Ejector tubing	Gray	T-1775-Gray	\$1.00
Saliva Ejector tubing	Beige	T-1775-SD	per foot
Saliva Ejector tubing	Black	T-1775-B	
Saliva Ejector Trap package of 10		S-1361	\$4.50



Deluxe Saliva Ejector Valve

### Solids Collector

Solids Collector Trap – Disposable vacuum trap		S1398	\$132.00 per 144
Solids Collector Assy. Complete		S1394	\$46.00



Solids Collector Trap

### Handpiece Tubing

Handpiece tubing 4-hole straight	Gray	T1741- G	\$33.00 ea.
Handpiece tubing 4-hole straight	Black	T1741- B	\$33.00 ea.
Handpiece tubing 4-hole straight	Beige	T1741- SD	\$33.00 ea.
Handpiece tubing 4-hole coiled	Gray	T-1733-G	\$33.00 ea.
Handpiece tubing 4 hole coiled	Black	T-1733-B	\$33.00 ea.
Handpiece tubing 4 hole coiled	Beige	T-1733-SD	\$33.00 ea.



Instrument Holders

### Instrument Holders

Universal Holder	Gray	H-1010G	\$23.00
	Black	H1010-B	\$23.00
Standard HVE Holder	Gray	H1020-G	\$23.00
	Black	H1020-B	\$23.00



Valves

### Valves

On/Off 3-way valve	Gray	V-1506-3-G	\$14.70
	Black	V-1506-3-B	\$14.70
Female Quick Disconnect	Blue	P1068-BLU	\$22.35
	Yellow	P1068-YEL	\$22.35

For more detailed information visit [www.rossorthodontic.com](http://www.rossorthodontic.com)  
or contact a specialist at 1-800-247-4109

**A Visit to Our Design Center  
Will Save You Precious  
Time & Money!**



**MIDLOTHIAN - DALLAS / FORT WORTH, TEXAS**  
*for an*  
**OFFICE DESIGN CONSULTATION**  
**AND HANDS-ON EQUIPMENT SELECTION.**

**Set-up a hands-on equipment and office design consultation**  
**contact Joe Ross 1-800-247-4109**

**For more detailed information call 1-800-247-4109**  
**Or visit [www.rossorthodontic.com](http://www.rossorthodontic.com)**  
**Or email [info@rossorthodontic.com](mailto:info@rossorthodontic.com)**

## **Office Design Comments**

*"In summary, I could not be happier than I am with the outcome of our new custom equipment and office design. I enthusiastically endorse Ross Orthodontic and encourage anyone who is looking to remodel or build a new office to take a close look at Ross Orthodontic."*

*Dr. C. Lynn Hurst, San Antonio, TX*

*"From helping with the initial clinical layout, to installing the units and sterilization area, your team has stepped up to the plate to ensure that our needs were met. Thank you so much for the clinic that our proud residents and faculty will be enjoying for years to come."*

*Dr. Kathleen McGarry and Dr. Jeryl English,  
University of Texas Health Science Center at Houston*

*"I am glad I got to personally meet everyone at your office in Midlothian and see how the factory operates-it is very impressive and you're staff are great! Everyone is pleasant, knowledgeable, and extremely helpful. Thanks again for everything; I look forward to working with you again in the future."*

*Dr. Neal LaRosa, Oakbrook Terrace, IL*

**ROSS ORTHODONTIC  
EQUIPMENT & OFFICE DESIGN**  
PO Box 882, Midlothian, Texas 76065

PRSRT. STD.  
**US POSTAGE  
PAID**  
New Richmond, WI  
54017  
Permit No. 16